

**DUAL-BAND ANTENNA、MIMO ANTENNA
COAXIAL CABLE、CONNECTOR、ADAPTER**

**網路增益天線、雙頻網路天線、電線電纜組立
強效易天納CPE、無線網路卡、POE電源轉接**

崙海尼可網路科技有限公司
WIFI-Link Technologies (TW) Ltd.

ABOUT US



WIFI-Link™ Technologies established in 2005, is a professional manufactures and supplier of Wireless antenna, Accessories, RF Coaxial connectors and Cable assemblies in Taiwan. We not only offer competitive prices, but also provide high-quality products because we perform a full range of quality control tests and any demand of quantity from 1 to 10,000 pcs for RG174U / RG316U / Low Loss 100 / RG58U / Low Loss 200 / RG59U / Low Loss 240 / RG213U / Low Loss 400 and miniature size cable with lower profile for 0.81 mm, 1.13 mm, 1.32 mm and 1.47 mm as well.

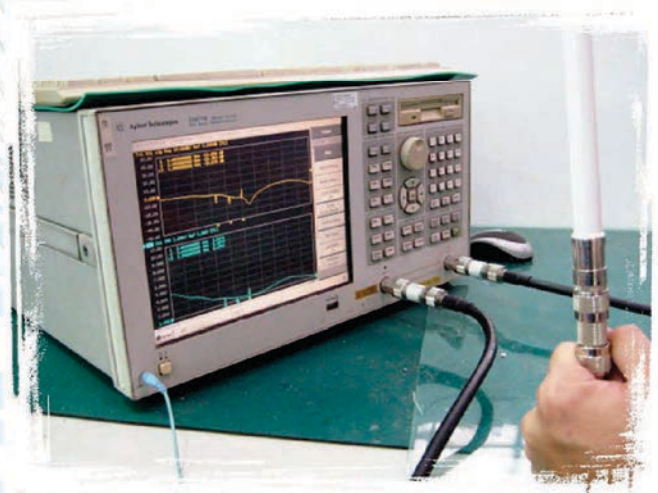
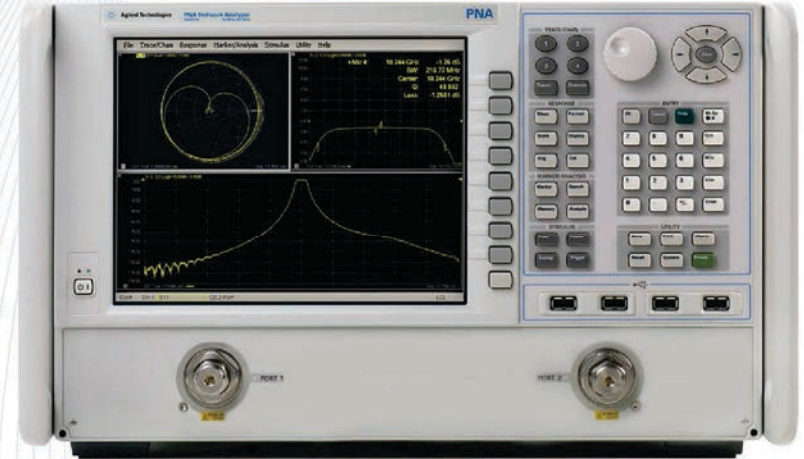
WIFI-Link™ designs and manufactures state of the art wireless communications solutions targeted at the PHS, CDMA, GSM, CDMA2000, WCDMA, also served in the Automotive, GPS, Broadband, Medical, Instrumentation, Military / Aerospace and Wireless infrastructure markets for selling to many countries in the world.

WIFI-Link™ can manufacture over 15 series, 1000 kinds of RF coaxial connectors and Cable assy. with exceed 15 million pieces per annual, so the OEM and ODM on every kind of RF connector and Cable assembly are most welcome. A recognized technology leader with world-class design, manufacturing, sales and support, WIFI-Link™ is your best choice for growing up together for global RF coax solutions partner.

ABOUT US

Capabilities for Production:

1. 10 MHz to 67 GHz N5227A PNA Microwave Network Analyzer x1
2. 85058E Economy Mechanical Calibration Kit, DC to 67 GHz, 1.85 mm x1
3. 85056KE02 Economy Mechanical Calibration Kit, DC to 40 GHz, 2.92 mm x1
4. 85052D Economy Mechanical Calibration Kit, DC to 26.5 GHz, 3.5 mm x1
5. N4697F Flexible Cable Set, 1.85 mm x2
6. 100KHz TO 8.5GHzE5071C ENA Series Network Analyzer x2
7. E5071B ENA RF Network Analyzer x2
8. MS4624B ENA Series Network Analyze
9. 85033E Standard Mechanical Calibration Kit, DC to 9 GHz, 3.5 mm x1
10. 85032F Standard Mechanical Calibration Kit, DC to 9 GHz, Type-N x1
11. 2 sets of semi & auto assembly machines
12. 10 sets of fully automatic lathe machines
13. 6 pcs of assembly and Production line, capabilities for R & D Engineering 5 engineers for Technology, R&D with knowledge able skill and experience in fieldsSampling from a concept to prototype with 7-10 days



ABOUT US

14. IP67: An IP number is used to specify the environmental protection of enclosures around electronic equipment. These ratings are determined by specific tests.

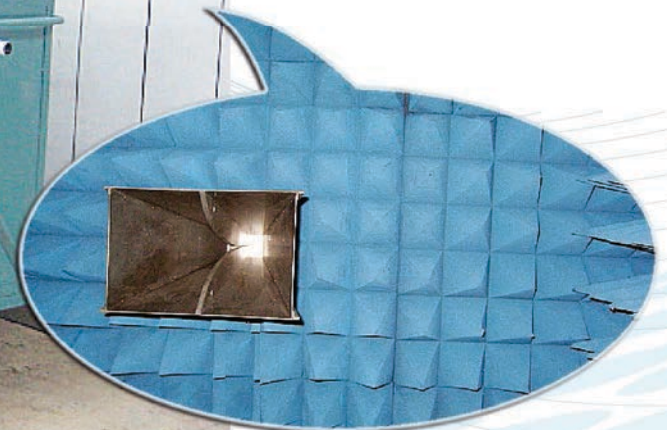
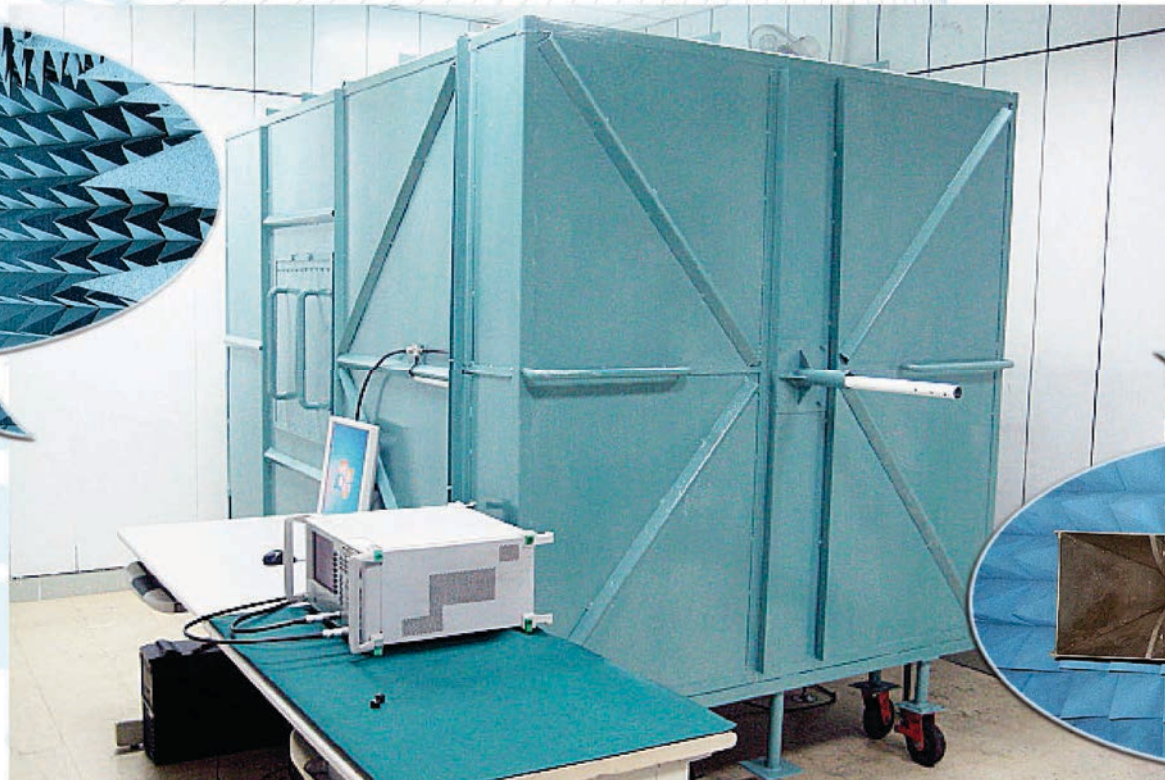
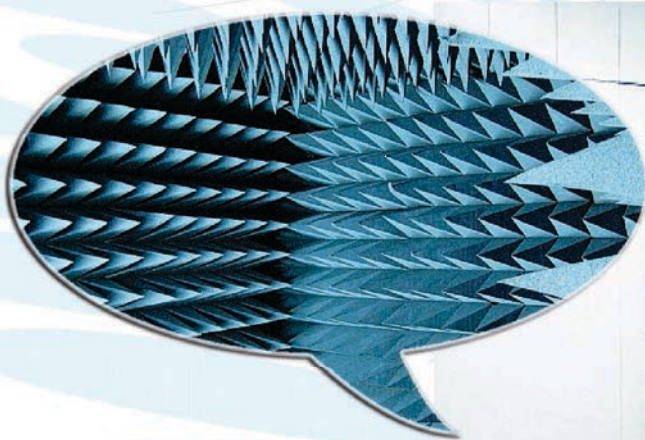
The IP number is composed of two numbers, the first referring to the protection against solid objects and the second against liquids. The higher the number, the better the protection. 6-Totally protected against dust 7-Protected against the effect of immersion between 15cm and 1m.

15. Chamber box

(1).Can be used for very wide band of frequency from FM waves to millimeter waves

(2).Quiet zone characteristics offered based on indigenous simulation

(3).PFP series of electromagnetic wave absorbers are used. Absorption of moisture allows us to offer highly durable electromagnetic anechoic chambers that do not deteriorate x1



ABOUT US

Capabilities for delivery on time:

We maintain a very large inventory of both finished and piece parts to serve our customer within 1 week delivery time and mass Production within 3-4 weeks delivery time.

Capabilities for quality assurance

8 staffers for quality management and control, 1 set Pull-Push scale and tread Gauge, 1 set Puncture & Insulation Tester, 1 set Torque Tester, 1 set Depth-Measure Device



For Contacting Our Team, Please Use The Following Information:

Sales: twsales@wifi-link.com

Tel: 886 6 2523801

Fax: 886 6 2526033

CONTENT

Cable Assembly

Connector-Test	P01
Adapter-Test	P02
Cable Assembly	P03
Cable Assembly-Test	P04
Cable Assembly	P05

Antenna

Dipole Antenna	P06
Dipole Antenna	P07
GSM Antenna	P08
GPS Antenna	P09
UHF Antenna	P10
VHF Antenna	P11
Omni/Mini Omni	P12
Omni/Mini Omni II	P13
Panel Antenna	P14
Grid Antenna	P15
Yagi Antenna	P16
CPE Antenna	P17

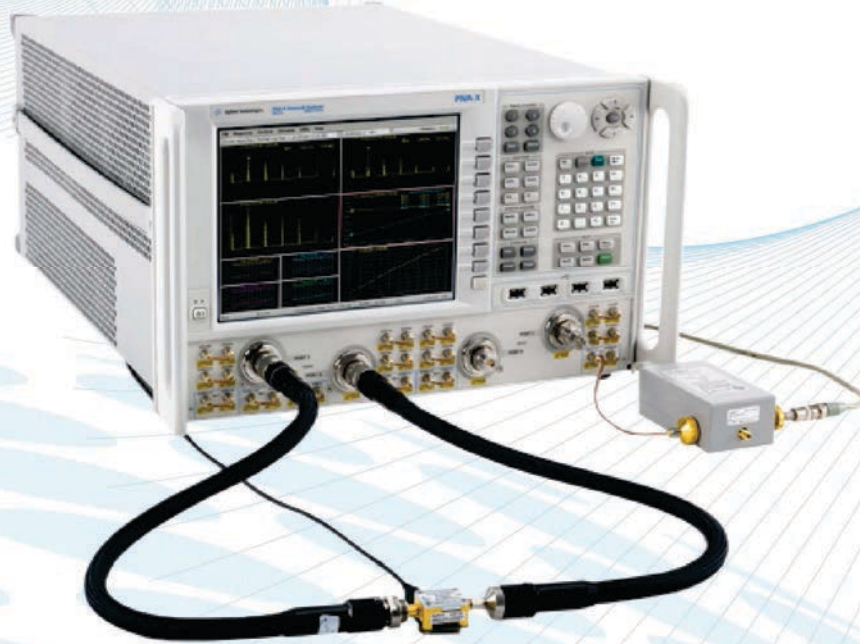
Connector

SMA	P18
MCX/MMCX	P19
BNC/FME	P20
N	P21
TNC	P22
MINI UHF/UHF	P23
SMB/SSMB	P24
F	P25

Adapter

SMA	P26
N	P27
TNC	P28
BNC	P29
FME	P30
MINI UHF	P31

CONNECTOR-TEST



These connectors use for High-Level cable and test to 35GHz,46GHz, 50GHz and even for 60GHz. The 1.85mm was designed to go beyond the SMA interface constraints, and as a result is NOT SMA compatible. Instead, maximum performance to the highest possible frequency that the geometry would allow, along with repeatable measurements after hundreds or even thousands of interconnects, were the design goals.

The connector outer conductor ID is 1.85 mm, and OD is 4.7 mm, allowing compatibility, so that the 1.85mm connector mates with the 2.4mm connector and has the same ruggedness. It's a 50 Ohms connector with performance up to 67 GHz. The 2.4 mm series consists of connectors designed for broadband microwave applications DC to 50 GHz. The connector outer conductor ID is 3.5 mm, and OD is 4.0 mm, allowing compatibility, so that the 3.5mm connector mates with the 2.4mm connector and has the same ruggedness. It's a 50 Ohms connector with performance up to 35 GHz. Depending upon the frequency range and required calibration effectiveness of a vector or scalar network analyzer (VNA or SNA, respectively), specific models can be used for full or lowband one-port Z0 calibration and full two-port isolation calibration. The connectors on both model series are fully mating compatible with SMA and can be used in test applications requiring a low VSWR termination with that connector. They are also mating compatible with each other and can be interchanged in applications where the frequency range is compatible.

SEPCIFICATION				
CONNECTOR	3.5mm	2.92mm	2.4mm	1.85mm
FREQUENCY	35GHZ	46GHZ	50GHZ	65GHZ
VSWR 18 GHZ MAX	1.25	1.15	1.1	1.1
VSWR 26 GHZ MAX	1.3	1.18	1.12	1.12
VSWR 40 GHZ MAX	-	1.25	-	-
VSWR 50 GHZ MAX	-	-	1.25	-
VSWR 65 GHZ MAX	-	-	-	1.33
DURBILITY	500 CYCLES MIN	500 CYCLES MIN	500 CYCLES MIN	500 CYCLES MIN
MATING TORQUE	8-10 IBS	8-10 IBS	8-10 IBS	8-10 IBS

ADAPTER-TEST



These connectors use for High-Level cable and test to 35GHz,46GHz, 50GHz and even for 60GHz. The 1.85mm was designed to go beyond the SMA interface constraints, and as a result is NOT SMA compatible. Instead, maximum performance to the highest possible frequency that the geometry would allow, along with repeatable measurements after hundreds or even thousands of interconnects, were the design goals.

The connector outer conductor ID is 1.85 mm, and OD is 4.7 mm, allowing compatibility, so that the 1.85mm connector mates with the 2.4mm connector and has the same ruggedness. It's a 50 Ohms connector with performance up to 67 GHz. The 2.4 mm series consists of connectors designed for broadband microwave applications DC to 50 GHz. The connector outer conductor ID is 3.5 mm, and OD is 4.0 mm, allowing compatibility, so that the 3.5mm connector mates with the 2.4mm connector and has the same ruggedness. It's a 50 Ohms connector with performance up to 35 GHz. Depending upon the frequency range and required calibration effectiveness of a vector or scalar network analyzer (VNA or SNA, respectively), specific models can be used for full or lowband one-port Z0 calibration and full two-port isolation calibration. The connectors on both model series are fully mating compatible with SMA and can be used in test applications requiring a low VSWR termination with that connector.

SEPCIFICATION				
CONNECTOR	3.5mm	2.92mm	2.4mm	1.85mm
FREQUENCY	35GHZ	46GHZ	50GHZ	65GHZ
VSWR 18 GHZ MAX	1.25	1.15	1.1	1.1
VSWR 26 GHZ MAX	1.3	1.18	1.12	1.12
VSWR 40 GHZ MAX	-	1.25	-	-
VSWR 50 GHZ MAX	-	-	1.25	-
VSWR 65 GHZ MAX	-	-	-	1.33
DURBILITY	500 CYCLES MIN	500 CYCLES MIN	500 CYCLES MIN	500 CYCLES MIN
MATING TORQUE	8-10 IBS	8-10 IBS	8-10 IBS	8-10 IBS

CABLE ASSEMBLY

Aerospace

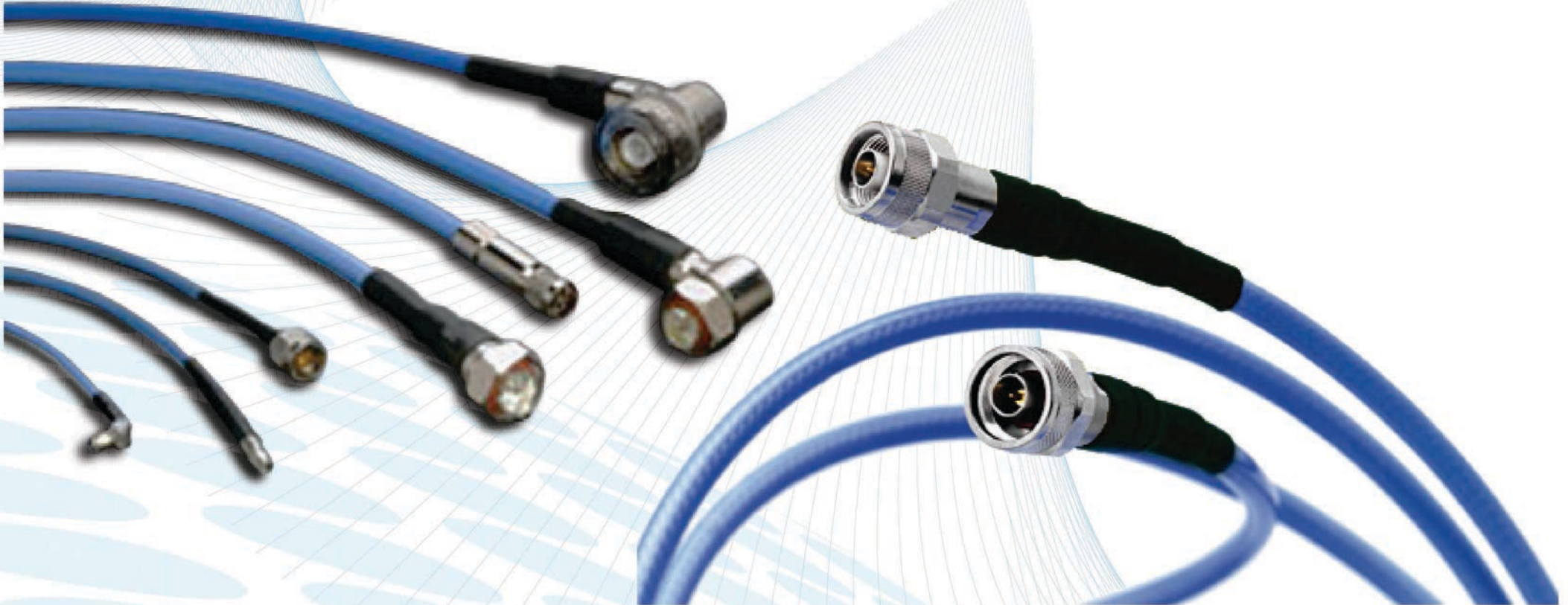
Defense

Industria

Telecom

Instrumentation

Medical



WIFI-Link™ cable assembly is a quality manufacturer of standard and custom cable assemblies . Complete product design, tooling design and fabrication, materials processing and selection, product manufacture, assembly, testing and packaging are available in our facility. We offer different kinds of cables and connectors to customize your requirement. WIFI-Link™ update the cable assembly skills to achieve not only High-Frequency but also the market demand. We even offer better RF cable assemblies with IP 66~IP 68 waterproof now. After price approved, we will provide drawings for approval. Please make sure all special requests are noted on drawing before approve. The Manufacturing System Command for each RF cable assembly will be built by engineer according to approved drawing. Every single procedure on Manufacturing System Command has quality control rule, and QC check in-processing all the time.

CABLE ASSEMBLY-TEST

Aerospace

Defense

Industria

Telecom

Instrumentation

Medical



WIFI-Link™ provides the High-Frequency cable and mix with the connector to become cable assembly. These High-Level cable assemblies can test 1.85mm.2.4mm.2.92mm.3.5mm connector and the range of frequency is 65GHz.50GHz.46GHz.35GHz. Maybe it's a good news to every company and we also offer different kinds of cables and connectors to customize your requirement. WIFI-Link™ update the cable assembly skills to achieve not only High-Frequency but also the market demand. We even offer better RF cable assemblies with IP 66~IP 68 waterproof now. After price approved, we will provide drawings for approval. Please make sure all special requests are noted on drawing before approve. The Manufacturing System Command for each RF cable assembly will be built by engineer according to approved drawing. Every single procedure on Manufacturing System Command has quality control rule, and QC check in-processing all the time. approve. The Manufacturing System Command for each RF cable assembly will be built by engineer according to approved drawing. Every single procedure on Manufacturing System Command has quality control rule, and QC check in-processing all the time.

CABLE ASSEMBLY



Welcome cable assembly section: There are many different kinds of cable and connector. We can customize what you want. Cables and connectors are fully compatible with one another. Assemblies are manufactured exactly according to customer specifications. We have many categories of coaxial cable assemblies in stock; low cost versions with brass connectors, test grade cables with stainless steel connectors and extra connector protection, etc. While SMA cable assemblies & Type N cable assemblies are our most popular products, 1.85mm cables assemblies, SMB cable assemblies, semi rigid cable, SMB to BNC cables assemblies, etc fill out our portfolio.

DIPOLE ANTENNA

802.11a/b/g/n

WIMAX3.5G

802.11ac

RFID

Bluetooth

Public Wireless Hotspot

ISM Band

Wireless Video Systems



Frequency	433MHz 、 482-952MHz
	1.7-2.1GHz 、 2.4-2.5GHz
	5.0-5.9GHz
Gain	2-9dBi
V.S.W.R	2.2 or 4 or 5
Connector	IPEX.SMA.BNC.N

Omni-directional
rubber duck antennas

N • TNC • BNC • F •
FME • SMA Connector



Wireless LAN
Antennas

N • TNC • BNC • F •
FME • SMA Connector



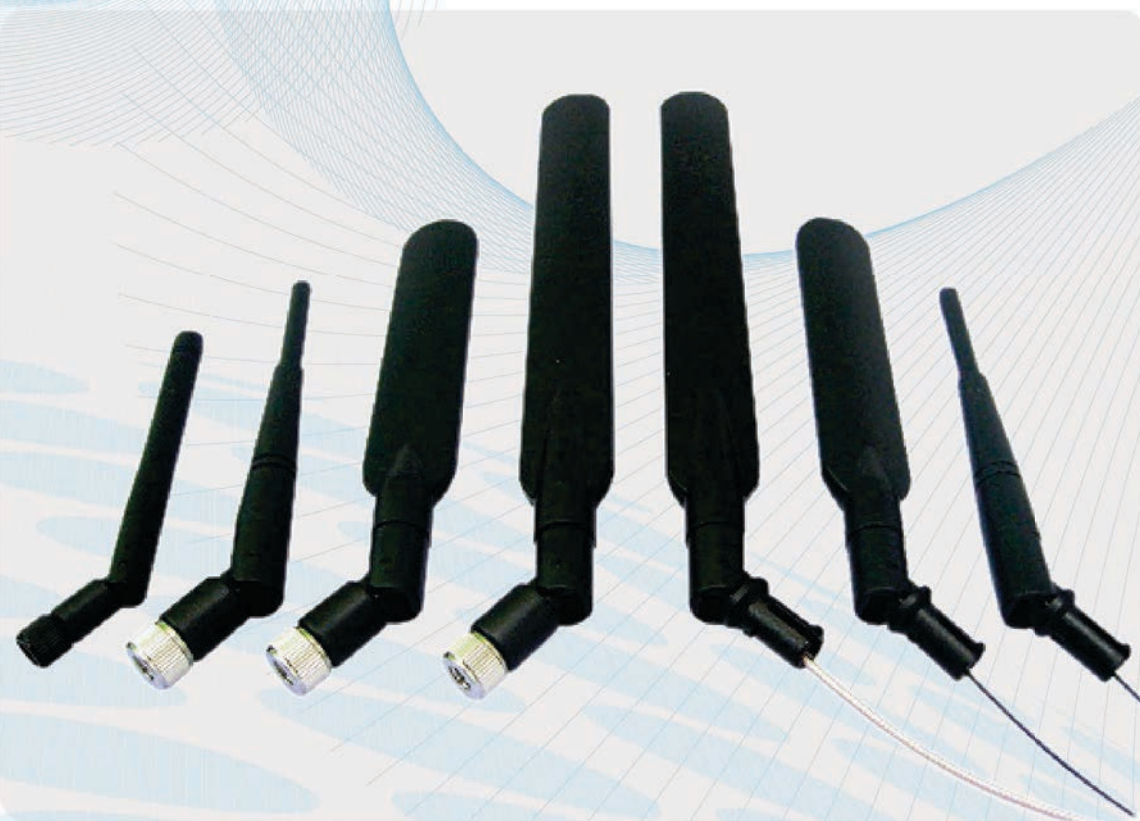
Outdoor Waterproof
Dual Band Antennas

N • TNC • BNC • F •
FME • SMA Connector



OUTDOOR WATERPROOF DUAL BAND ANTENNA

WIRELESS LAN ANTENNA



Wireless LAN Antennas
GSM Antennas



Wireless LAN Antennas
2.4G WiFi Antennas



Wireless LAN Antennas
2.4G WiFi Antenna Extension cable



Wireless LAN Antennas
2.4/5G WiFi Antennas Extension cable



Wireless LAN Antennas
2.4/5G WiFi Antennas



Outdoor Waterproof Dual Band
2.4/5.8G 5dBi WiFi Antennas



Outdoor Waterproof Dual Band
2.4/5.8G 7dBi WiFi Antennas



Outdoor Waterproof Dual Band
2.4/5.8G 9dBi WiFi Antennas



IEEE 802.11ac

IEEE 802.11ac is a wireless computer networking standard of 802.11, developed in the IEEE Standards Association process, providing high-throughput wireless local area networks on the 5 GHz band.

This specification has expected multi-station WLAN throughput of at least 1 gigabit per second and a single link throughput of at least 500 megabits per second (500 Mbit/s). This is accomplished by extending the air interface concepts embraced by 802.11n: wider RF bandwidth (up to 160 MHz), more MIMO spatial streams (up to 8), multi-user MIMO, and high-density modulation (up to 256 QAM).

GSM ANTENNA

GSM wireless pay phone

fixed commercial phone

PCMCIA card

navigation device

vehicle wireless device

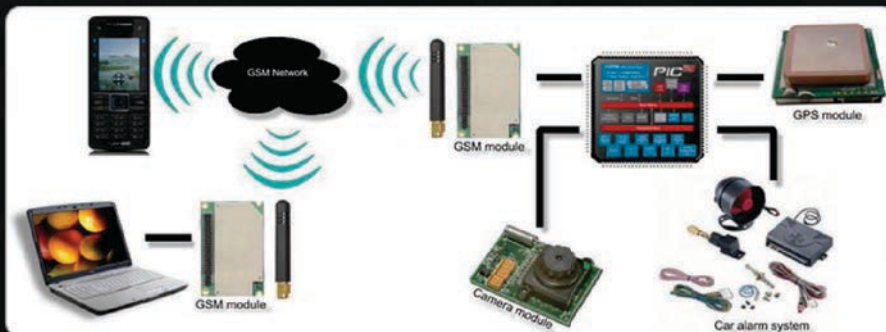
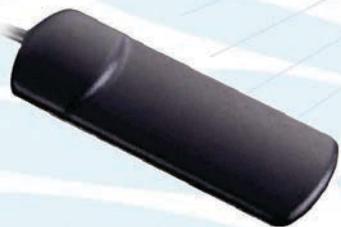
High sensitivity

Vehicle tracking applications

Network solution providers

Web Browsing

Information Kiosks



Frequency | 423-420MHz 、 824-960MHz 、 1.7-2.1GHz

Gain | 0-15dBi

Connector | SMA.N

GPS ANTENNA

Water Resistance

Magnet Mount Base

Excellent Temperature Stability

Low Noise Figure

High Sensitivity

Car Navigation

Marine GPS

Security Surveillance

Weather Balloon

Fleet Management Systems



Frequency | 1574.42-1576.42MHz 、 1601-1602MHz

Gain | 02dBi - 05dBi

Connector | SMA.MCX.FAKRA

UHF ANTENNA

Television broadcasting

Trunked radio

Cordless phones

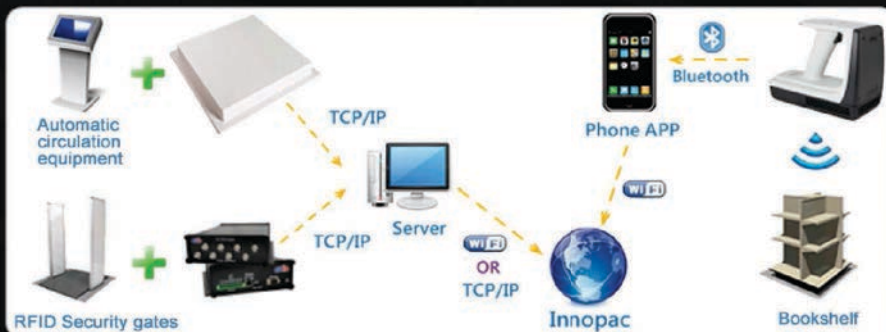
Digital television

Walkie-talkies

mobile telephone

Satellite communication

Very high frequency



Frequency | 144-430MHz 、 450-830MHz

Gain | 02dBi - 12dBi

Connector | SMA.BNC.M.N

VHF ANTENNA

Very high frequency

Television broadcasting

Marine

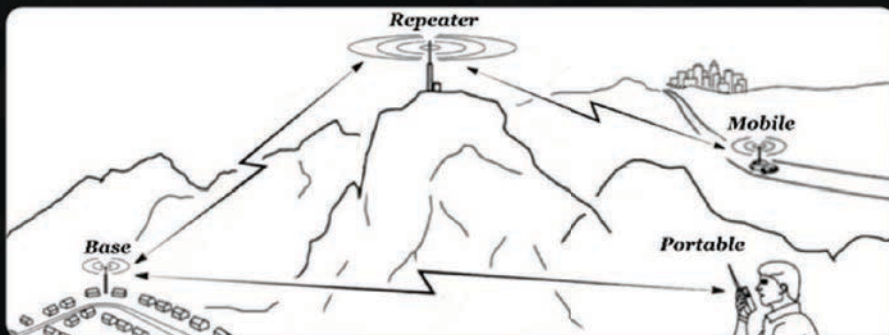
Low Noise Figure

Mobile telephone

Cordless phones

Trunked radio

High Sensitivity



Frequency	144-174MHz、215-252MHz
Gain	02dBi - 10dBi
Connector	N

OMNI / MINI OMNI ANTENNA

802.11a/b/g/n

802.11ac

LTE4G

WIMAX3.5G

CDMA

IEEE 802.16e

Public Wireless Hotspot

Wireless Video Systems

RFID

Bluetooth

ISM Band

WiBro

Frequency | 1.7-2.1GHz

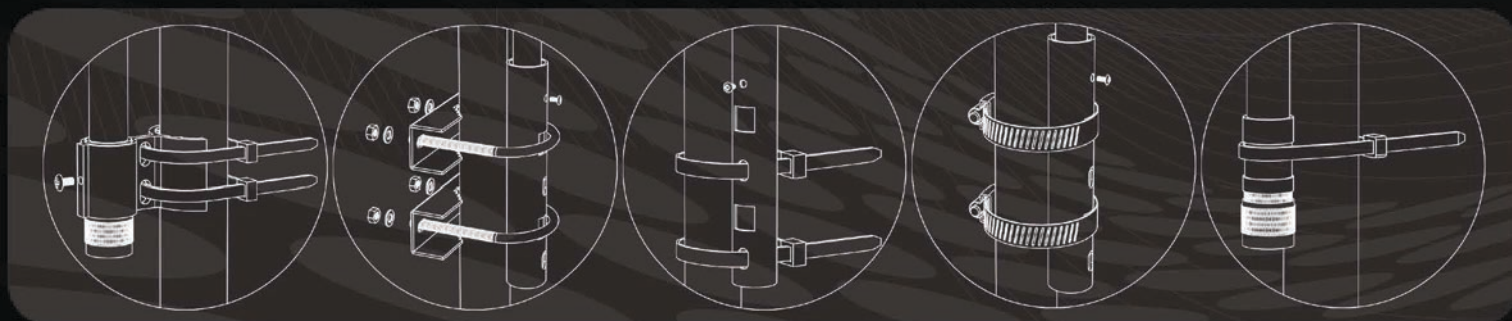
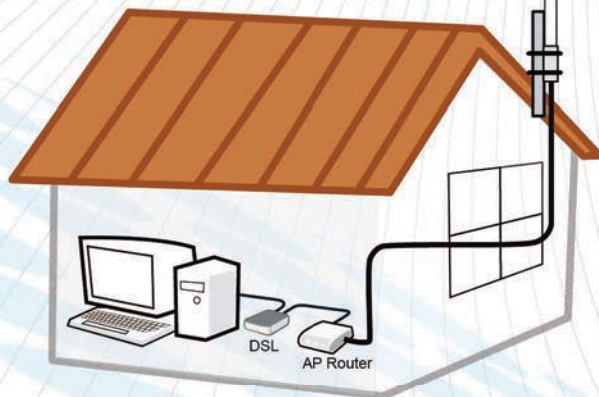
| 2.4-2.5GHz

| 5.0-5.9GHz

Gain | 05-15dBi

V.S.W.R | 1.5

Connector | SMA.TNC.N



OMNI / MINI OMNI II ANTENNA

802.11a/b/g/n

802.11ac

LTE4G

WIMAX3.5G

CDMA

IEEE 802.16e

Public Wireless Hotspot

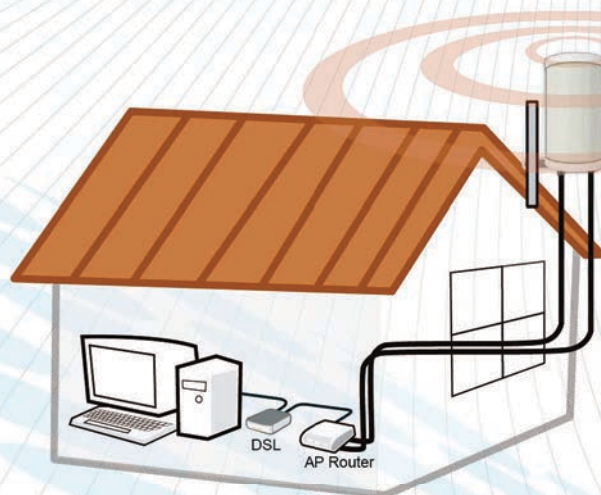
Wireless Video Systems

RFID

Bluetooth

ISM Band

WiBro



Frequency | 2.4-2.5GHz

3.4-3.6GHz

5.0-5.9GHz

Gain | 05-18dBi

V.S.W.R | 1.5 or 2

Connector | TNC.N



PANEL ANTENNA

802.11a/b/g/n

802.11ac

LTE4G

WIMAX3.5G

CDMA

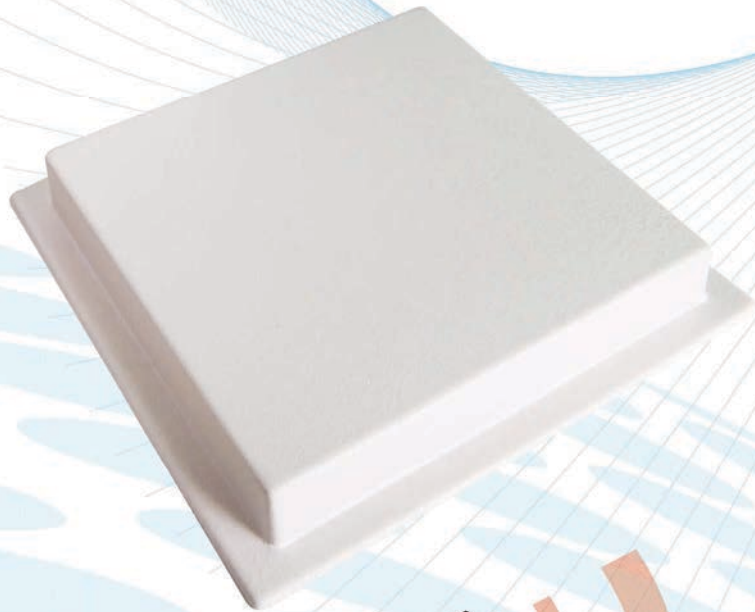
Public Wireless Hotspot

Wireless Video Systems

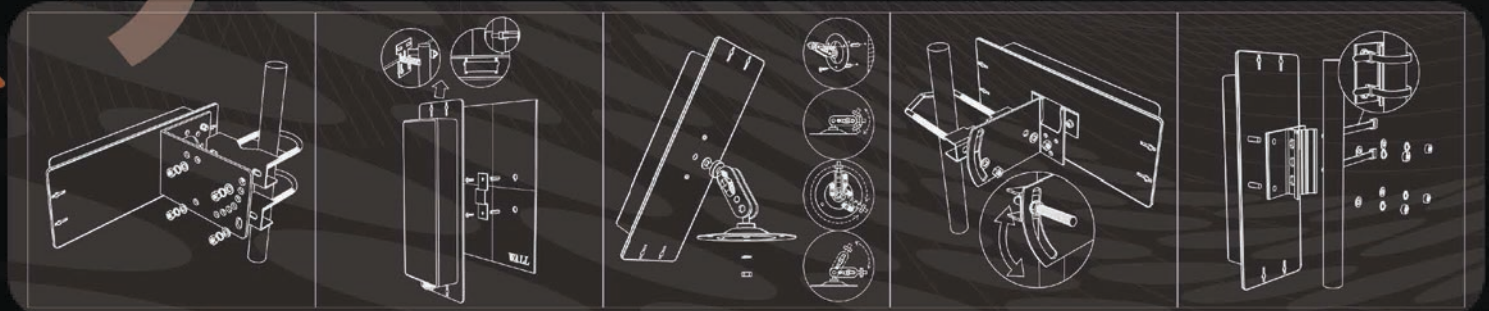
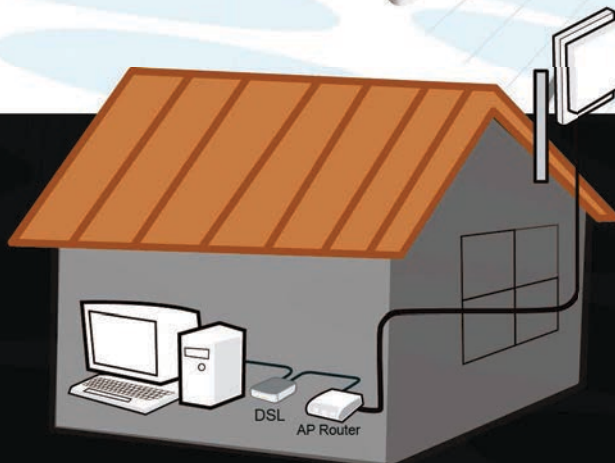
RFID

Superior performance

ISM Band



Frequency	1.7-2.1GHz 、 2.4-2.5GHz
	2.5-2.7GHz 、 3.4-3.6GHz
	5.0-5.9GHz
Gain	05-18dBi
V.S.W.R	1.5 or 2
Connector	SMA.TNC.N



GRID ANTENNA

802.11a/b/g/n

WIMAX3.5G

802.11ac

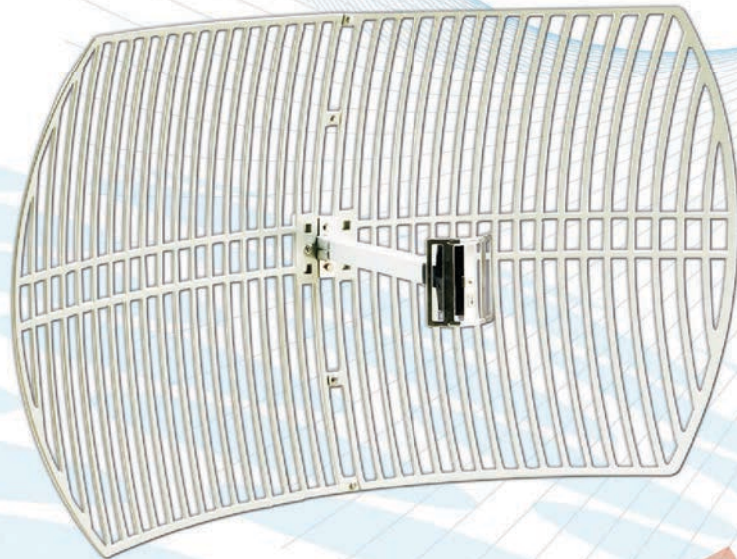
RFID

All weather operation

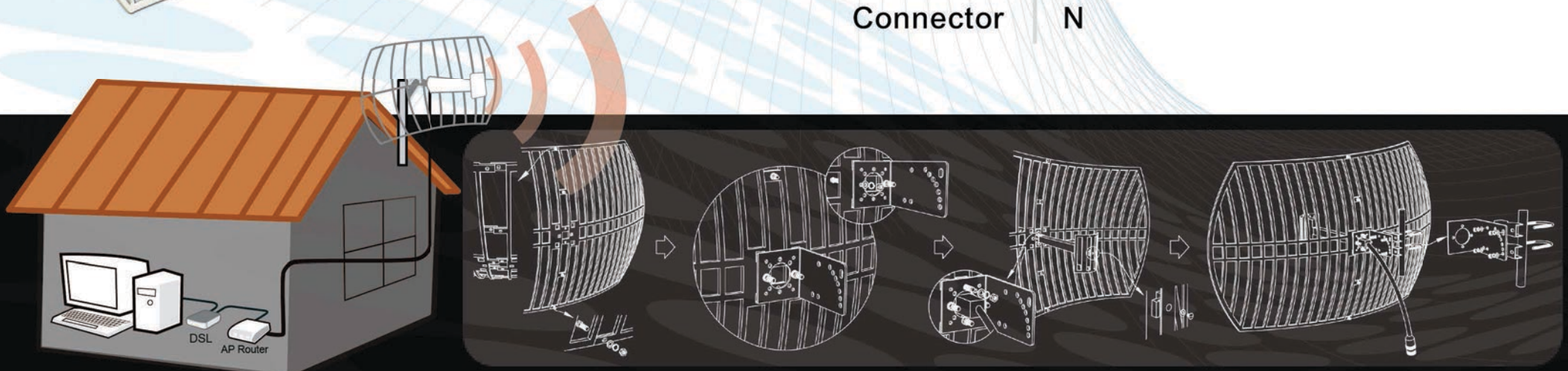
Public Wireless Hotspot

ISM Band

Wireless Video Systems



Frequency	1.7-2.1GHz 、 2.3-2.4GHz
	2.5-2.7GHz 、 3.4-3.8GHz
	4.6-4.7GHz 、 5.0-5.9GHz
Gain	24-30dBi
V.S.W.R	1.5
Connector	N



YAGI ANTENNA

802.11a/b/g

WIMAX3.5G

Superior

RFID

Heavy duty mounting

Public Wireless Hotspot

ISM Band

Wireless Video Systems

Frequency | 824-960MHz

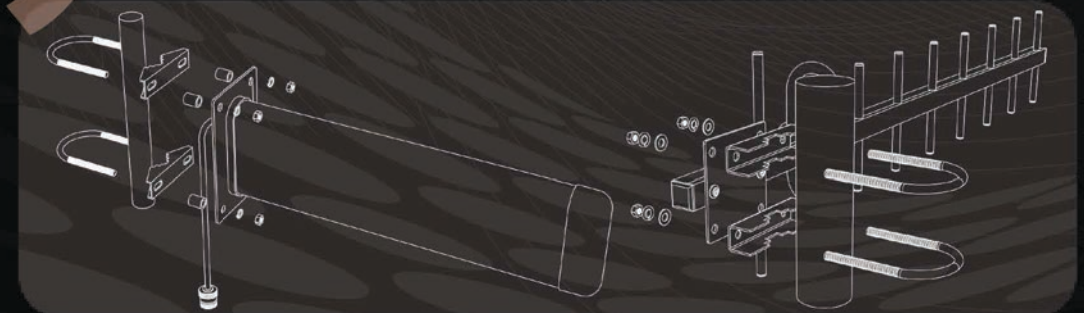
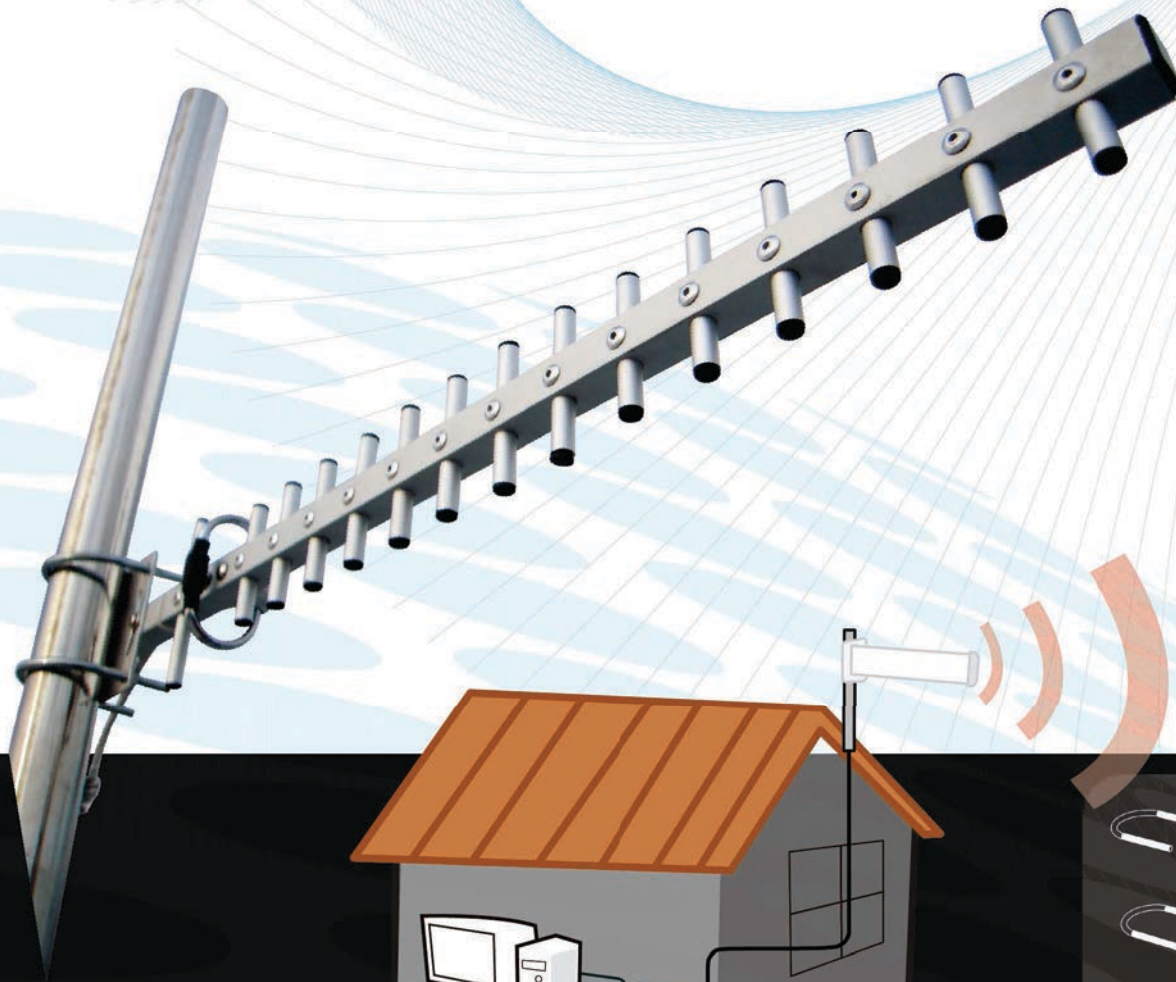
| 1.7-2.1GHz

| 2.4-2.6GHz

Gain | 09-16dBi

V.S.W.R | 1.5

Connector | SMA.N



CPE ANTENNA

802.11a/b/g/n

WIMAX3.5G

802.11ac

RFID

Bluetooth

Public Wireless Hotspot

ISM Band

Wireless Video Systems



Frequency | 2.4-2.5GHz

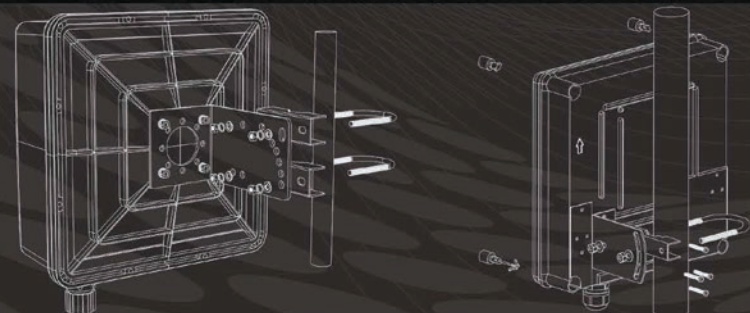
3.4-3.8GHz

5.0-5.9GHz

Gain | 12-20dBi

V.S.W.R | 1.5

Connector | SMA



CONNECTORS

SMA connector

MAX 27GHz

VSWR 1.15

50 / 75ohm

Base Stations

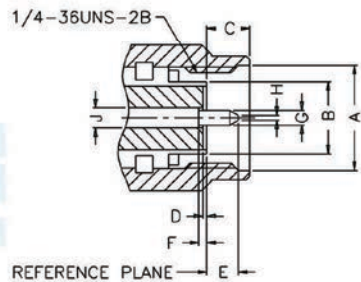
Instrumentation

Wireless Lan

Mil / Aero

PC / LAN

Information Kiosks



PLUG

Letter	Millimeters [Inches]	
	Minimum	Maximum
A	6.35 [.250]	6.73 [.265]
B	4.53 [.178]	4.59 [.181]
C	2.54 [.100]	3.43 [.135]
D	0.00	0.25 [.010]
E	1.91 [.075]	2.54 [.100]
F	0.00	0.25 [.010]
G	0.90 [.035]	0.94 [.037]
H	0.00	0.38 [.015]
J	1.24 [.049]	1.30 [.051]



SMA MALE CRIMP



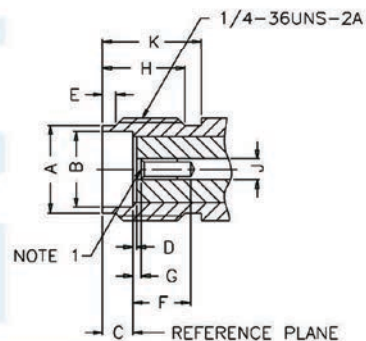
RP SMA MALE CRIMP



SMA MALE
PANEL MOUNT



SMA MALE
RIGHT ANGLE CRIMP



JACK

Letter	Millimeters [Inches]	
	Minimum	Maximum
A	5.28 [.208]	5.49 [.216]
B	4.60 [.181]	4.67 [.184]
C	1.88 [.074]	1.98 [.078]
D	0.00	0.25 [.010]
E	0.38 [.015]	1.14 [.045]
F	2.92 [.115]	—
G	0.00	0.25 [.010]
H	4.32 [.170]	—
J	1.24 [.049]	1.30 [.051]
K	5.54 [.218]	—



SMA FEMALE CRIMP



RP SMA FEMALE
CRIMP



SMA FEMALE
PCB MOUNT RIGHT
ANGLE



SMA FEMALE
PCB MOUNT

CONNECTORS

BNC / FME connector

MAX 4GHz

VSWR 1.3

50 / 75ohm

Surge protection

Cable Modems

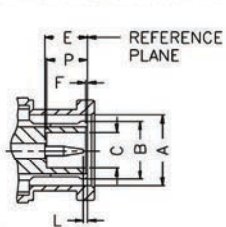
Broadcast

Oscilloscopes

Radios

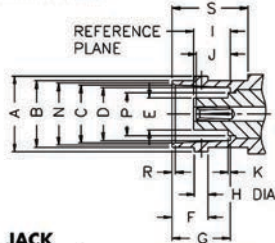
Computer / LANs

-BNC-



PLUG

Letter	Millimeters [Inches]	
	Minimum	Maximum
A	9.78 [.385]	9.91 [.390]
B	FLARED TO MEET GOOD ELECTRICAL CONTACT	
C	4.83 [.190]	—
D	1.32 [.052]	1.37 [.054]
E	5.33 [.210]	5.84 [.230]
F	0.15 [.006]	0.46 [.018]
L	0.08 [.003]	1.02 [.040]
N	—	0.64 [.025]
P	5.28 [.208]	5.79 [.228]
Q	1.98 [.078]	—
R	2.06 [.081]	2.21 [.087]



JACK

Letter	Millimeters [Inches]	
	Minimum	Maximum
A	10.97 [.432]	11.07 [.436]
B	9.60 [.378]	9.70 [.382]
C	8.31 [.327]	8.46 [.333]
D	8.10 [.319]	8.15 [.321]
E	—	4.72 [.186]
F	5.18 [.204]	5.28 [.208]
G	8.31 [.327]	8.51 [.335]
H	1.91 [.075]	2.08 [.081]
I	4.78 [.188]	5.28 [.208]
J	4.72 [.186]	5.23 [.206]
K	—	0.15 [.006]
L	4.95 [.195]	—
M	2.06 [.081]	2.21 [.087]
N	8.79 [.346]	9.04 [.356]
P	—	6.50 [.256]
R	0.38 [.015]	0.76 [.030]
S	10.52 [.414]	—



BNC MALE CRIMP



BNC MALE RIGHT ANGLE CRIMP

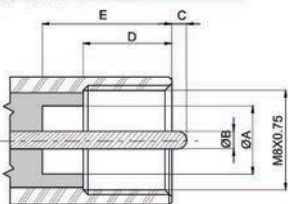


BNC FEMALE CRIMP



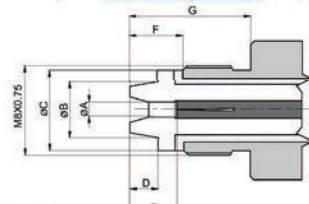
BNC FEMALE FOR PCB MOUNT

-FME-



PLUG

Letter	Millimeters(Inch)	
	Minimum	Maximum
A	4.70(.185)	—
B	1.25(.049)	
C	—	1.00(.039)
D	6.40(.252)	—
E	9.00(.354)	—



JACK

Letter	Millimeters(Inch)	
	Minimum	Maximum
A	1.35(.053)	
B	—	4.60(.181)
C	—	8.80(.268)
D	—	2.60(.102)
E	4.00(.157)	5.00(.197)
F	4.90(.193)	—
G	7.60(.299)	—



BNC FEMALE PANEL MOUNT



FME MALE CRIMP



FME MALE RIGHT ANGLE PCB MOUNT



FME FEMALE CRIMP



WIFI-Link Technologies (TW) Ltd.

TEL: +886-6-2523801 FAX: +886-6-2526033

E-mail: twsales@wifi-link.com

**Address: No.25, Zhongyang Rd., Yongkang Dist.,
Tainan City 710, Taiwan (R.O.C.)**